

Ashland of Southern Lifestyle Collection

Modular Home Floor Plan

1,817 Square Feet

3 Bedrooms

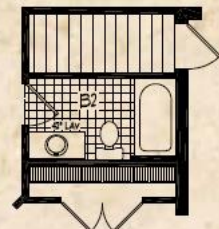
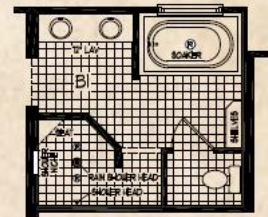
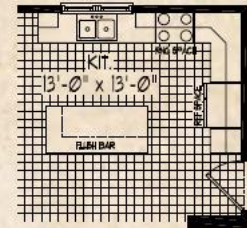
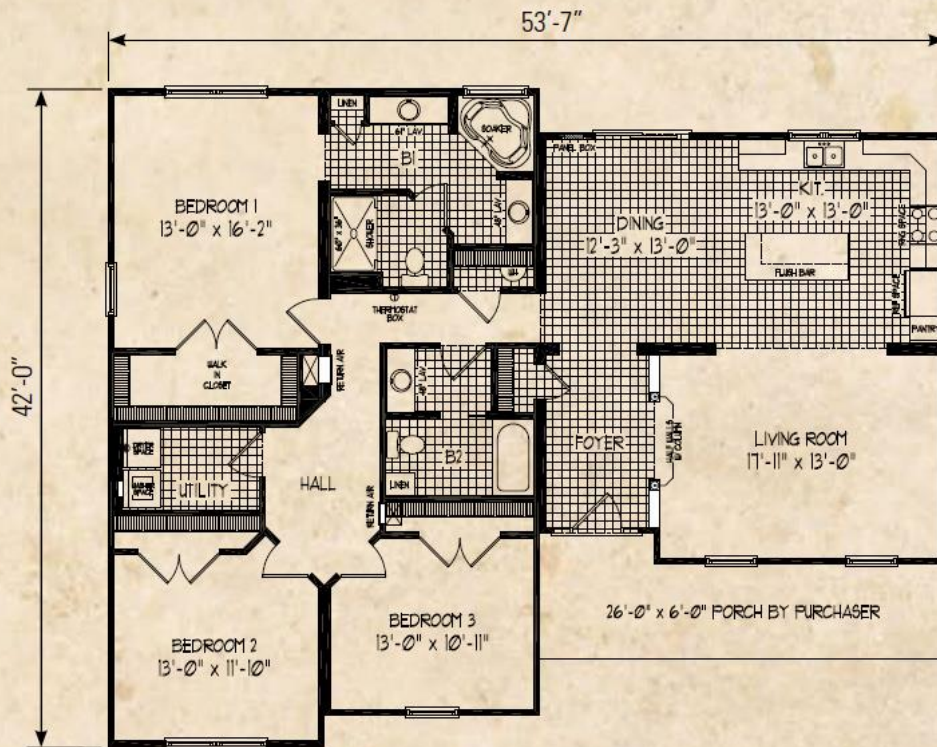
2 Bath

Building Footprint: 42-0 x 52-7

The Ashland is packed with features. The welcoming foyer includes a large coat closet and opens onto a spacious living room- the entrance to which is flanked by dramatic half walls and columns. The living room opens into the kitchen which includes a large island with counter-top overhangs- perfect for a casual breakfast with the family. The master bedroom has an en-suite bath and large walk-in closet. The master bath is spa-like with a large corner soaking tub, two separate vanity spaces, a linen closet and a privacy closet for the toilet and shower. This plan also comes with alternate designs for the master bath, the kitchen and to include basement stairs. The elevation shows a 26 x 6 porch which is to be built on-site by your builder, or you can opt to include the porch roof in your modular home package.



Total Living Area: 1,817 sq. ft.



Call Catskills Modular Homes to Discuss Your New Modular Home

845-988-9637